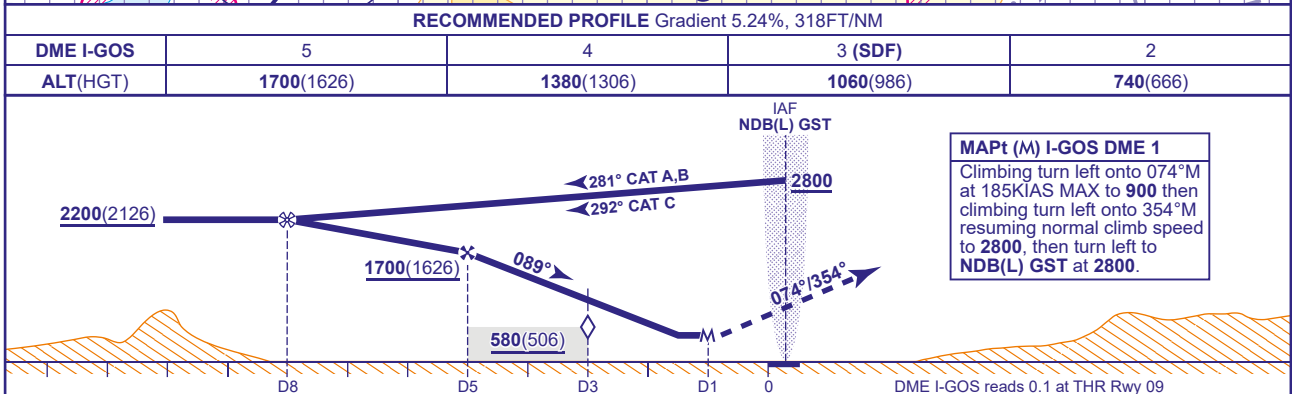


101	GLOUCESTERSHIRE NDB(L)/DME RWY 09 (ACFT CAT A,B,C)
74	



ALTERNATIVE PROCEDURE EXTENDED HOLDING PATTERN
Extend the outbound leg of NDB(L) GST holding pattern descending to **2200**. At I-GOS DME 8 turn left to intercept FAT. When established continue as for Main Procedure.

AERO INFO DATE 18 DEC 25